



# GAT MONTHLY MEMBERSHIP PROGRESS REPORT

Results as of: 4/30/2023

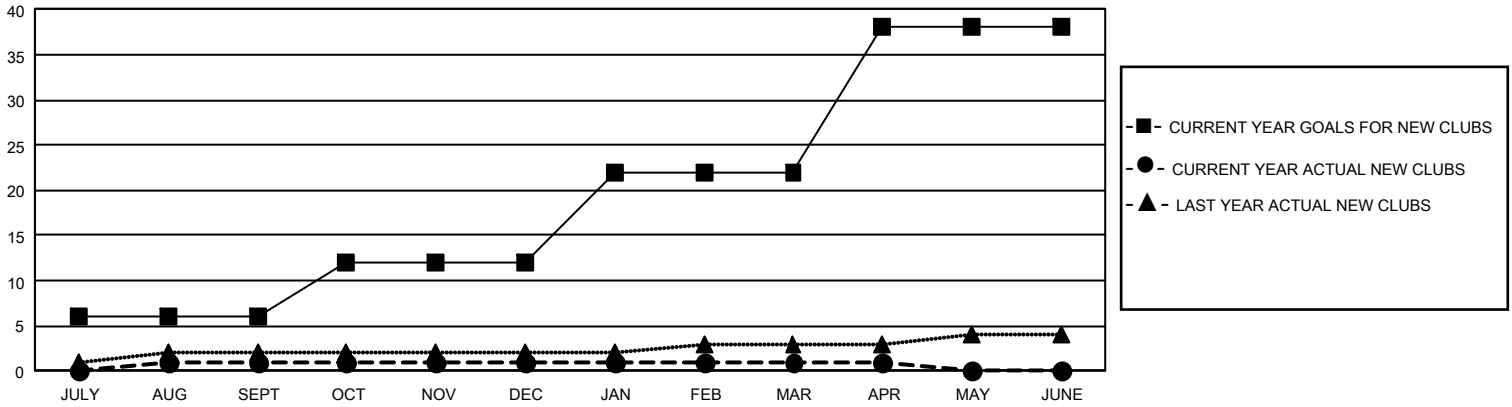
## GMT Constitutional Area 1, Group D

REPORT DOES NOT INCLUDE CLUBS IN UNDISTRICTED AREAS.

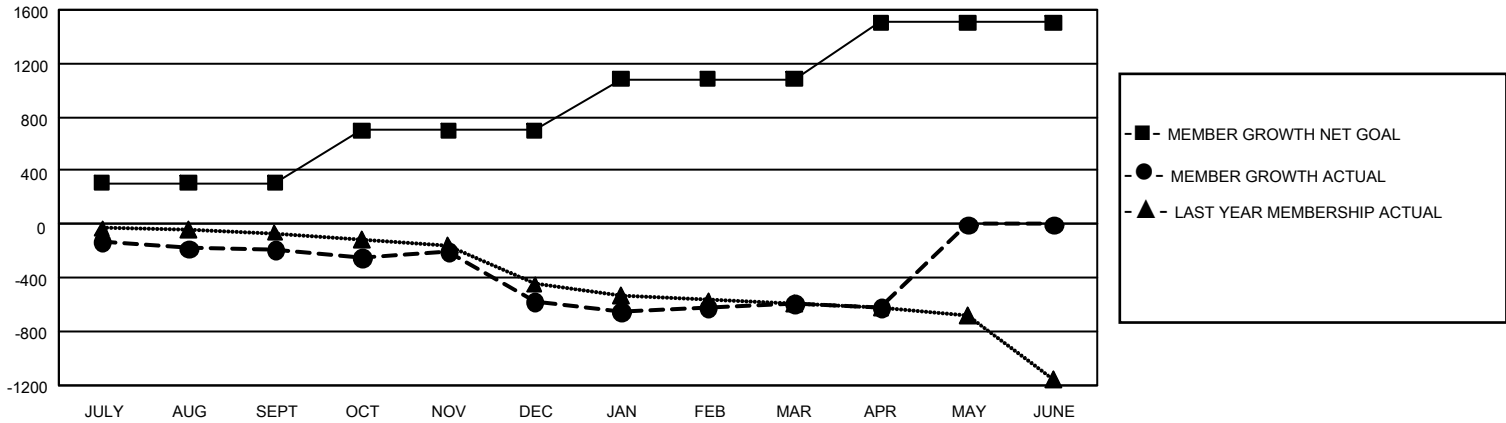
Clubs			
RESULTS FOR 2022-2023			
QUARTER	NEW CLUB GOAL	NEW CLUBS	DROPPED CLUBS
JULY/AUG/SEPT	18	1	8
OCT/NOV/DEC	18	0	16
JAN/FEB/MAR	30	0	1
APR/MAY/JUNE	48	0	1

Members			
RESULTS FOR 2022-2023			
QUARTER	MEMBER GROWTH NET GOAL	MEMBER GROWTH ACTUAL	DROPPED MEMBERS ACTUAL (including transfers)
JULY/AUG/SEPT	309	508	625
OCT/NOV/DEC	389	522	854
JAN/FEB/MAR	384	731	621
APR/MAY/JUNE	424	170	193

GOALS AND ACTUAL NEW CLUBS CUMULATIVE



GOALS AND ACTUAL MEMBERS CUMULATIVE



<b>DROPPED CLUBS: 26</b>  <b>DROPPED MEMBERS</b> DECEASED 493 CLUB CANCELLED 146 OTHER 1,653 <b>TOTAL 2,292</b>	528 CLUBS OF 1,031 ADDED 1 OR MORE NEW MEMBERS	<b>GENDER DISTRIBUTION</b> MALE 16,704 (66.40%) FEMALE 8,449 (33.59%) NON BINARY 0 (0.00%) PREFER NOT TO ANSWER 4 (0.02%)
	<a href="#">CLICK HERE FOR CUMULATIVE MEMBERSHIP DATA</a>	TOTAL FAMILY UNIT MEMBERS 5,088 FAMILY MEMBERS PAYING HALF DUES 2,620